



ARTPARK MAINSTAGE THEATER **TECHNICAL PACKET**

LOCATION: 450 South 4th Street, Lewiston, NY 14092

CONTACT: Sonia Kozlova Clark, Executive Director: sclark@artpark.net 716-754-9000 x 117

Susan Stimson, Production Manager: susan@artpark.net - 7716-754-9000 x 142 (March-Sept only)

The Artpark Mainstage Theater venue now qualifies for the Empire State Musical & Theatrical Tax Credit Program providing qualified companies to receive a fully refundable credit of 25 percent of certain production and transportation expenditures directly related to the technical period on touring production development and performances.

All tickets through [tickets.com](https://www.tickets.com)

STAGE INFORMATION:

Proscenium Opening: Width 50' / Depth 55' / Height 30' (79' grid) / 32' wings

Adjustable Portal: Width 38M 50' / Height 20M 30'

Stage Depth: Edge of Stage to Curtain Line – 7'M 6"

Curtain line to line: 96M 48' **

**this is usable depth of stage. While we do have 106 line sets, the last ten are devoted to storage. There is an adequate crossover space behind Line 96 for performers etc.

Stage Width: Line center to Stage left of stage house 39'
Line center to Stage right of stage house 39'

**There is additional offstage storage space with variable ceiling heights

Stage Height: Deck to Grid 79' / Actual flying height 72'

Counterweight System: 96 sets on 6" centers

Operating rail Stage left 30' off deck
Double purchase system
Arbor capacity 1400 lbs.
Pipe capacity 700 lbs.
Pipe length 60', 6 cables each pipe
Pipe size 1 ½" I.D.
Pipe Weight 150 lbs.

Note: There is a pin rail stage left at 30' off the deck. The distance between the 2 fly floors is 66'. Stage left fly floor to pipe 5'. Stage left fly floor to pipe 1'.

Scenery Load In	Stage Left through 2 12' x 12' roll up doors Loading dock at truck height Space for 2 – 45' trailers at dock Wardrobe room adjacent to Load in area
Stage Floor	NOT trapped – no basement “Sprung Dance Floor” with permanent gray linoleum surface
Curtain	“Guillotine” action only Opening in Center Electrical stage left at deck (minimum opening time – 8 seconds)
Soft Goods Hanging	5 sets black velour legs and borders (legs 30'x 13') (borders 12' x 60') 1 black velour drop 40' x 60' w/ center opening 1 black velour 40' x 60' note: all blacks without fullness/borders piped at bottom 1 white cyc 40' x 60' 1 black scrim 40' x 60' 1 black scrim 30' x 60'
Stage Manager's Desk	Located Stage left Page system to all dressing rooms Cue lights and clear com communication
Orchestra Pit	Dimensions 60' x 16' Capacity 60-70 Depth from stage 6' -10” Lighted music stands 50 Chairs 80 Pit Piano 6' Baby Grand Onstage Concert Grand 9' Grand Korg Electric C-50G

**** PLEASE NOTE THERE IS NOT HEATING OR AIR CONDITIONING ON STAGE, only in the Dressing Rooms.**

ELECTRICAL INFORMATION

Power 3 Phase 4 Wire 60 cycle – AC only
1600 Amps available
Company Switchboard located at Stage left

Followspots 2 Xenon Super Troopers
 Located in Booth 100 feet across from stage
 30-35 degree angle

FOH Lighting “Rail” located 125’ fr50m stage – 20-25 degree angle
 “Box Booms” Left and Right
 Box Left to SR 70’
 Box Left to CTR 60’
 Box Left to SL 50’
 20-35 degree angle
 “Cove” to Stage 60’, 40-45 degree angle

Control Board The house board is a ETC Expression 3
 The Patch panel – located Stage left is the telephone jack type with
 4 OUTLETS PER DIMMER. There is an inter-connect panel
 allowing FOH circuits to be connected directly to road boards.
 However, we recommend that companies. Use FOH control from
 the house board.
 A 5 pin DMX cable can be run directly from house board to a road board
 to control front of house for front light.

Lighting Notes The PAR 56 strip lights are lamped with 500 M/FL quartz lamps.
 They are circuited so that each unit
 covers a portion of the stage width and provide excellent down or
 backlight.

FOH positions now contain all instruments that space will allow.

The number 1 & 2 Ceiling Pipe positions along with
 Pit and Apron slots are permanently focused to cover the orchestra
 pit when the area is covered. They are not available. The short
 booms may be plugged in any pattern you wish. There are 10
 circuits available for each side of the stage. Additional equipment
 available:

2	6 x 16 Lekos
12	6 x 12 Lekos
6	6 x 9 Lekos
24	Par 64 Cans

We do not supply color – Please bring your own, pre-cut if possible.
 Frame sizes are as follows:

12 x 12 Lekos	13 ¾ “ x 13 ¾ “
8 x 9 Lekos	11 ¾ “ x 11 ¾ “
10 x10 Lekos	11 ¾ “ x 11 ¾ “
6 x 16 Lekos	7 ½ “ x 7 ½ “

6 x 12 Lekos	7 ½ “ x 7 ½ “
6 x 9 Lekos	7 ½ “ x 7 ½ “
8” Fresnels	10” x 10”
PAR 64 Cans	10” x 10”
R 40 Strips	6 ¼ “ x 5 ¾ “
PAR 56 Strips	7 ½ “ x 9 ½ “

There are 5 pre hung electric pipes over stage with 6x12 lekos 750 watts along with fernels 1000 watts. Cyc lights are flying and a groundrow both with 1000 watt bulbs. 2 back light pipes DS and UPS with 18 par 64 MFL 1000 watt lights on each pipe. The side light 5 ladders SL AND 5 ladders SR with source 4's with 26 degree lenses and some 19 degree lenses.

FOH cove has 24 source 4's with a 10 degree lense excellent for front light.

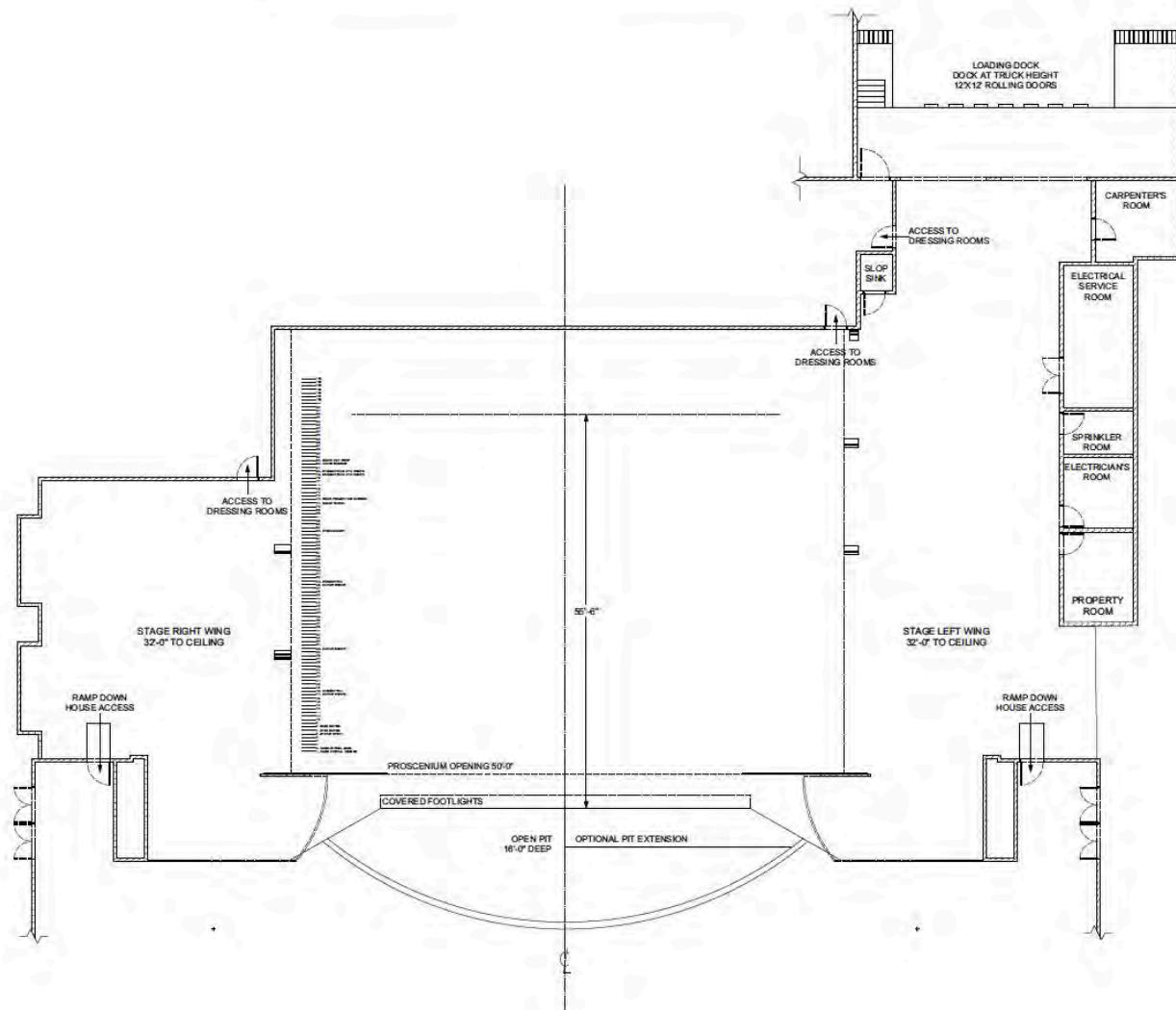
In preparing any plot hook-up for use at Artpark, please follow our format. This will speed up communication. *PLEASE SEND YOUR PLOT, HOOK-UP AND LIST OF ANY SPECIAL NEEDS AT LEAST 2 WEEKS PRIOR TO YOUR LOAD IN DATE.*

Wardrobe Room Located at ground floor adjacent to stage left entrance of stage area. Equipped with washer, dryer, Sewing machine, and steamer.

Dressing Rooms Ground Floor (stage level)

A	2 people
B	2 people
D	Conference Room
E	16 people
F	15 people
G	4 people
H	15 people
I	16 people
J	4 people

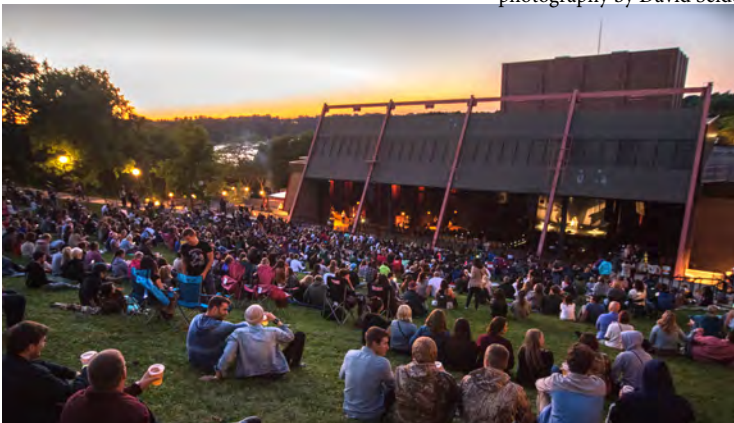
*(** There are two additional Dressing Rooms on 2nd floor if needed)*



Project No.		Tech Pack	
Drawing Title		Groundplan	
Design:	NA	Drawn:	NA
Client:	Lynne Kosdabian	Scale:	1/8" = 1'-0"
Author:	ArPark	Sheet:	Sht-1
Date:	02/05/18	Page:	2
Client/Project:	ArPark TechPack.vbx		



*photography by David Seide



Artpark Lighting Inventory

Overhead Electrics

100	6x12 lekos (Altmans and Strands)
33	1K 8" Fresnels
38	1K Par 64s
16	500 W 12 lamp 3 circuit Par 56 Strips
10	1K 6 lamp 3 circuit Cyc Lights Altman

Cove

24	Source 4 10 degree 750W
22	Colortran 15-35 Zooms 1000W

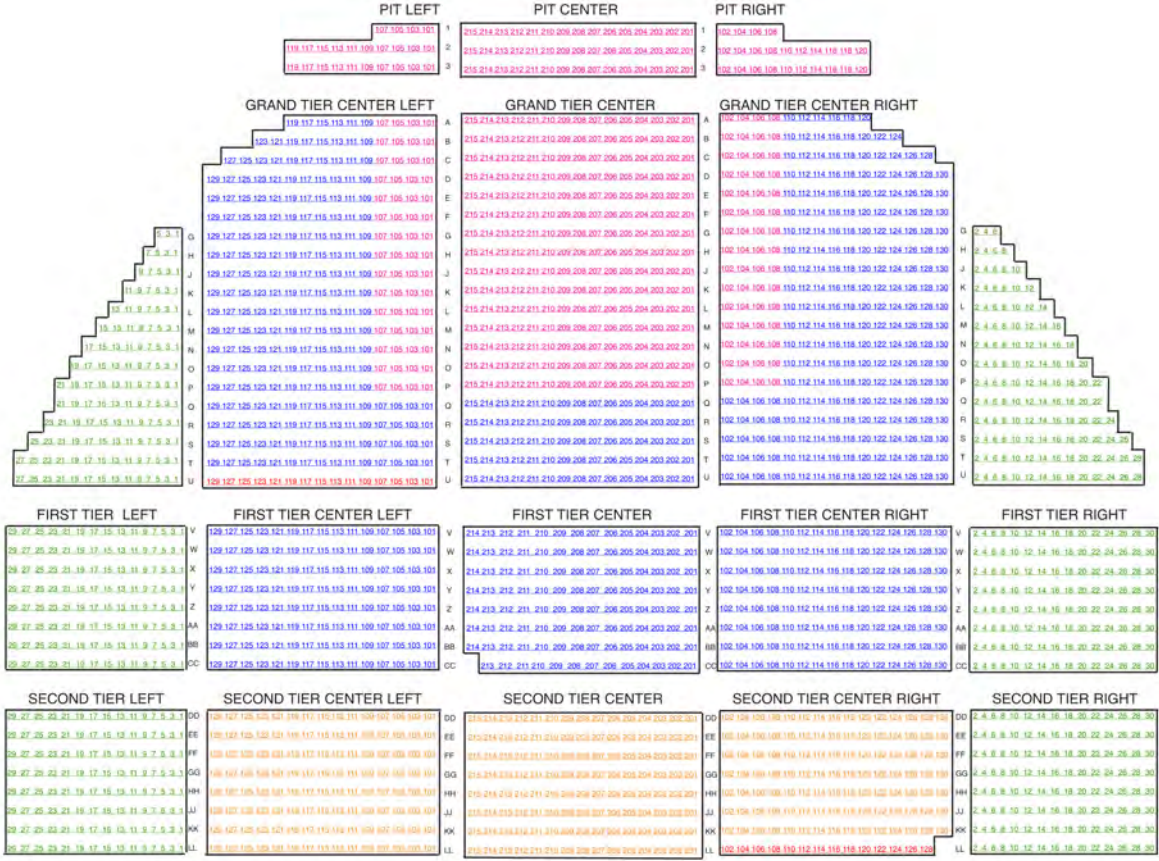
Rail

20	Strand 12 X12 Axials 1000W
10	Altman 360Q 6 X 22s 1000W

Box Booms

16	Colortran 15-35 Zooms 1000w
4	Strand 10 X12 Axials 1000W

STAGE



KEY

- Prime
- Section A
- Section B
- Section C
- Wheelchair Access

Vestments of the Holy Spirit

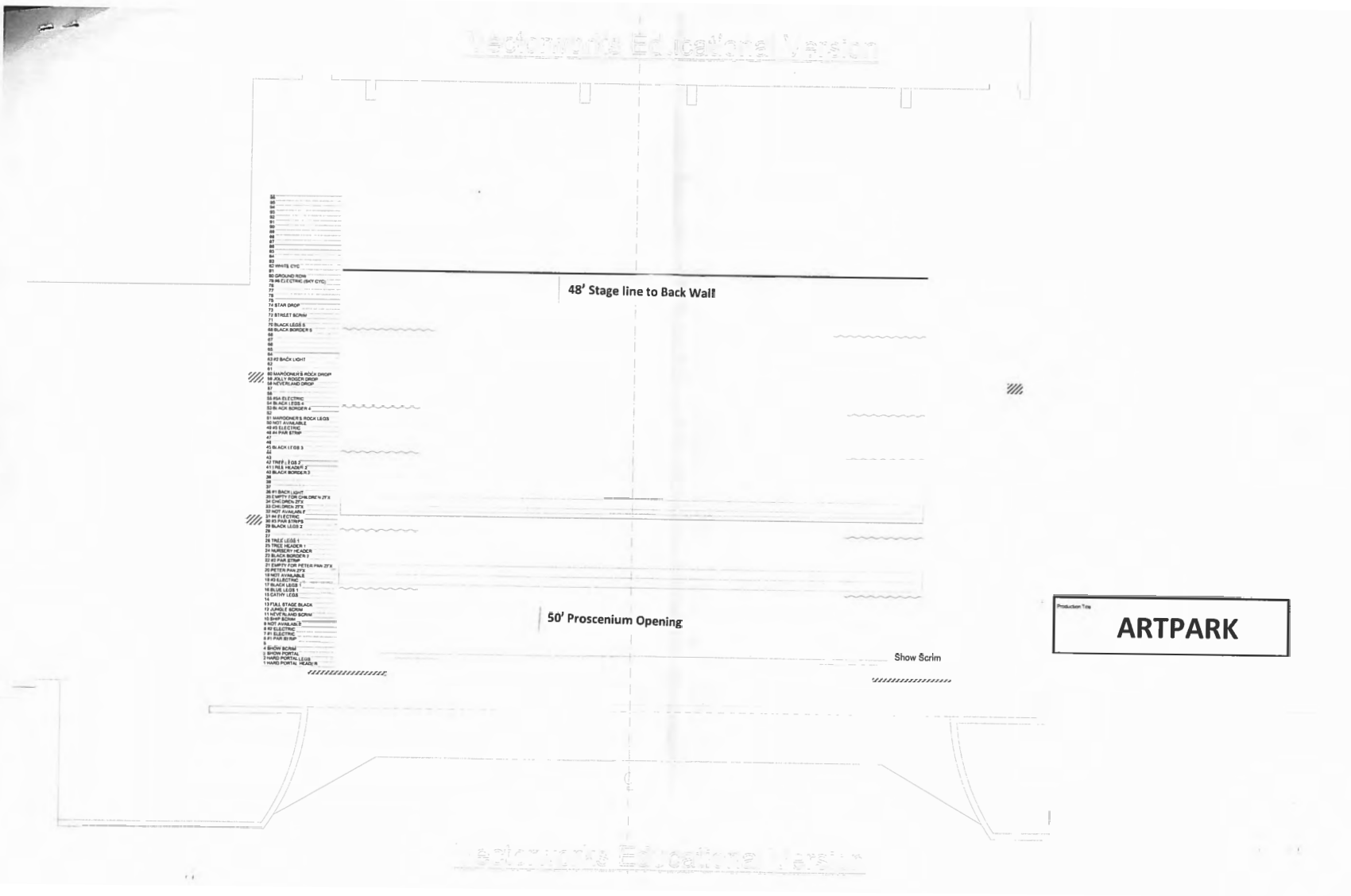
- 85
- 86
- 87
- 88
- 89
- 90
- 91
- 92
- 93
- 94
- 95
- 96
- 97
- 98
- 99
- 100
- 101
- 102
- 103
- 104
- 105
- 106
- 107
- 108
- 109
- 110
- 111
- 112
- 113
- 114
- 115
- 116
- 117
- 118
- 119
- 120
- 121
- 122
- 123
- 124
- 125
- 126
- 127
- 128
- 129
- 130
- 131
- 132
- 133
- 134
- 135
- 136
- 137
- 138
- 139
- 140
- 141
- 142
- 143
- 144
- 145
- 146
- 147
- 148
- 149
- 150
- 151
- 152
- 153
- 154
- 155
- 156
- 157
- 158
- 159
- 160
- 161
- 162
- 163
- 164
- 165
- 166
- 167
- 168
- 169
- 170
- 171
- 172
- 173
- 174
- 175
- 176
- 177
- 178
- 179
- 180
- 181
- 182
- 183
- 184
- 185
- 186
- 187
- 188
- 189
- 190
- 191
- 192
- 193
- 194
- 195
- 196
- 197
- 198
- 199
- 200

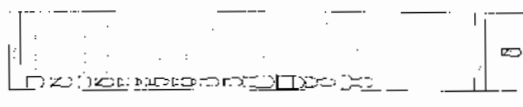
48' Stage line to Back Wall

50' Proscenium Opening

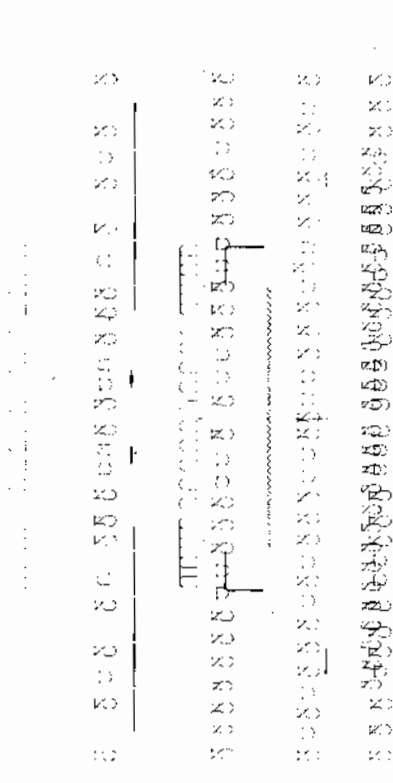
Show Scrim

Production Title
ARTPARK



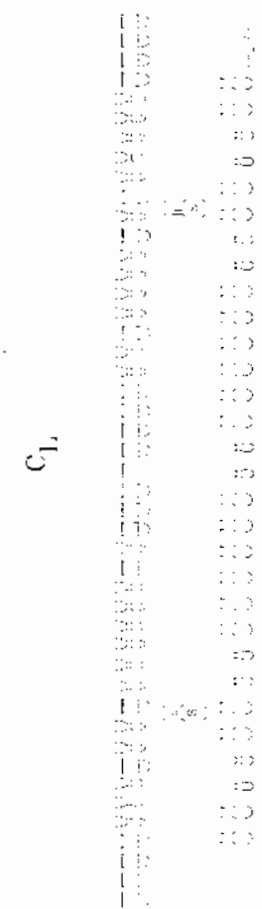


1. 100% OF THE
 2. 100% OF THE
 3. 100% OF THE
 4. 100% OF THE
 5. 100% OF THE
 6. 100% OF THE
 7. 100% OF THE
 8. 100% OF THE
 9. 100% OF THE
 10. 100% OF THE



1. 100% OF THE
 2. 100% OF THE
 3. 100% OF THE
 4. 100% OF THE
 5. 100% OF THE
 6. 100% OF THE
 7. 100% OF THE
 8. 100% OF THE
 9. 100% OF THE
 10. 100% OF THE

1. 100% OF THE
 2. 100% OF THE
 3. 100% OF THE
 4. 100% OF THE
 5. 100% OF THE
 6. 100% OF THE
 7. 100% OF THE
 8. 100% OF THE
 9. 100% OF THE
 10. 100% OF THE



1. 100% OF THE
 2. 100% OF THE
 3. 100% OF THE
 4. 100% OF THE
 5. 100% OF THE
 6. 100% OF THE
 7. 100% OF THE
 8. 100% OF THE
 9. 100% OF THE
 10. 100% OF THE

C1,

Lighting w/Set-Plan 2

1. 100% OF THE
 2. 100% OF THE
 3. 100% OF THE
 4. 100% OF THE
 5. 100% OF THE
 6. 100% OF THE
 7. 100% OF THE
 8. 100% OF THE
 9. 100% OF THE
 10. 100% OF THE

Mainstage Theater at Artpark – 11975 - 2018

When Artpark opened in 1974 the stage of the main theater was among the largest in the entire State of New York and by far the best equipped in Western New York to produce fully staged theatrical productions. As early as 1975, the first full year of operation, Music Theater began to play a prominent role at Artpark with the production of Man of La Mancha. Over 10,000 people attended the five performances of this musical and the glorious history of musicals at Artpark was off and running.

Over the course of the next 40 years, 104 fully staged musicals would be produced and presented on the Artpark stage before audiences ranging from 10,000 to 40,000.

Located on the US Canadian border just minutes North of Buffalo, Artpark serves a population of approximately 1.2 million Western New Yorkers and over 1 million Canadian residents. Music Theater, classical music and Rock fans come from as far East as Rochester and beyond and from as far West and North as Hamilton, Ontario. Over the course of its 40 year history, over 2.5 million persons have attended musical theater performances at Artpark.

Among most recent concerts presented at Artpark Mainstage Theater are Bob Dylan, Jack White, Sting, Alabama Shakes, The Avett Brothers, Decemberists, Vanessa Williams, Lindsey Stirling, Buffalo Philharmonic Orchestra, Bale de Rua, Artpark productions of the musicals: The Odyssey by Todd Almond and Lear DeBessonet (2018), Peter Pan (2015), May Poppins (2014), The Sound of Music ((2013), Cinderella (2012), Fame 2010 and many more. Artpark is home to all local High Schools and dance schools for their graduations, as well as the commencement of the Niagara University and the Artpark Theater Academy.

The Artpark Main Stage Theater is well equipped to produce musicals on a grand scale and can accommodate most of the large music spectacles of recent years. It remains one of the best equipped and largest stages in the region.

The Artpark Mainstage Theater venue now qualifies for the Empire State Musical & Theatrical Tax Credit Program providing qualified companies to receive a fully refundable credit of 25 percent of certain production and transportation expenditures directly related to the technical period on touring production development and performances.

For rental and tour development proposals, please contact Executive Director, Sonia Clark at sclark@artpark.net or call 716-754-9000 x 117.